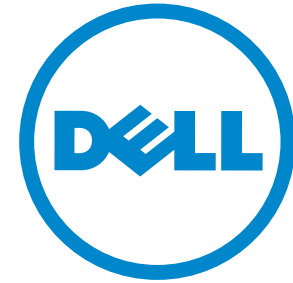




Dell Wyse Xenith

The zero clients built for Citrix HDX.



Wyse



Your desktop just got easier. Much easier.
Meet the Dell Wyse Xenith family, here:



Meet Dell Wyse Xenith, built for Citrix HDX

Your desktop just got easier

Delivering major advances in performance, simplicity and longevity, the Dell Wyse Xenith range of next generation zero clients are yet again redefining the category Dell Wyse itself created.

Performance It's built for Citrix HDX. So users receive an instant-on desktop and enjoy a rich media experience that doesn't tax servers or networks.

Simplicity And it's easy too. With simple plug-n-play operation and auto-configuration.

Longevity Dell Wyse Xenith takes care of everything it needs to stay up-to-date by adapting to network security and protocol advances.

Flexibility Tailor your zero clients to your performance, budget, and size requirements.

All from Dell Wyse. The company building more zero clients today than anyone else. Yes: Anyone.



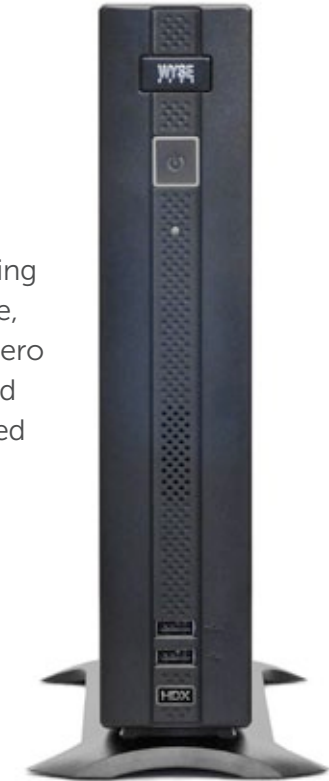
Dell Wyse Xenith 2

With its extremely compact footprint Xenith 2 is the ideal companion device for Citrix XenDesktop and Citrix HDX technology.



Dell Wyse Xenith Pro

It's all about delivering a high-performance, high-connectivity zero client: going beyond anything ever offered before in 'Zero'.



Start

Introduction

Features

Technical

Contact

Print

Features Dell Wyse Xenith family

Your desktop just got easier. Much easier.

They might be zero clients, but the Dell Wyse Xenith family lacks nothing in the cool-features department and arrives ready to go, straight out of the box.

Performance



Dell Wyse Xenith 2 connectivity



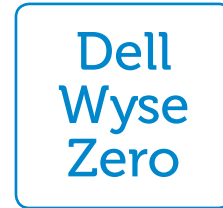
Dell Wyse Xenith Pro connectivity



Green



Dell Wyse Zero



Take a tour of the
Dell Wyse Xenith family



Start

Introduction

Features

Technical

Contact

Print

Performance

Why let your desktop hold you back?

We believe zero clients should give you a no-limits experience. It's this vision and thinking that gets a Dell Wyse Xenith zero client from power-on to productive in just six seconds.

Dell Wyse Xenith 2's extremely compact and efficient design sports gigabit LAN and wireless-b/g/n, so it's ready for serious tasks whether you're wired in or not.

For those power users needing even more performance, connectivity and power, there's the Dell Wyse Xenith Pro. It takes the Dell Wyse Zero engine to entirely new levels of performance, connectivity and best of all, productivity. Proving that zero limitations means just that.

ARMADA
v7

Armada processor

Xenith 2 features an ARMADA™ 510 v7 1.0 GHz SoC and is ready to work in seconds.



AMD Sempron Processor

The advanced technology contained in this CPU from AMD lowers power consumption without compromising performance.

- AMD64 Technology
- PowerNow! technology
- HyperTransport technology



Continue tour



Start

Introduction

Features

Technical

Contact

Print

Absolutely zero That's Dell Wyse Xenith

Welcome to a desktop with Zero limitations

Zero delays

Go from 0 to productivity faster than a Ferrari.

Six seconds is all it takes to get up and running. Its Zero engine firmware – with a file size smaller than the average digital photo coupled with an efficient design – means it's three times faster than competing devices and sports gigabit LAN and wireless-b/g/n.*

So it's ready for some serious tasks before most exotic sportscars have even warmed up. And with an Armada System-on-chip (SoC) and built-in media processor Armada 510 in hardware, Dell Wyse Xenith 2 puts on a show with HD video performance that won't tax your server, network, budgets – or your patience.

Xenith 2 and Xenith Pro now support HDX 3D Pro, a fully 3D immersive virtual session. Xenith 2 and Xenith Pro allow users to run demanding, processing-intensive 3D Applications like CAD/CAM with true connectivity within any Citrix HDX environment.

Zero management

**That's right: no management.
It's a Zero configuration client.**

Say goodbye to fiddling, tweaking and head-scratching. Just take it out of the box and connect it to your network. Job done. As Dell Wyse Xenith and your Citrix XenDesktop server sets everything up to your exact preferences.

Amazingly Dell Wyse Xenith is completely configurable too, yet no management software is needed. So unlike some other zero clients, when a hot new feature is released, you won't need to buy new ones to get it.

Zero security issues

Or worries either.

Dell Wyse Xenith is the only dynamically configurable zero client that is virus and malware immune. Yes, immune. There are no Windows or Linux APIs for viruses to latch on to, so even network and memory-borne viruses can't attack. Unlike other HDX compatible clients, Xenith needs absolutely no local firewall or anti-virus protection.

Zero energy use (almost)

Saves the earth. Literally.

Dell Wyse Xenith 2 draws less than 7 watts of power in full operation. That's less than every PC on the planet. And no multimedia rich client on the market today uses less energy. Before you know it, the trees will be hugging you.

Zero compromise user experience

Built for Citrix HDX.

Dell Wyse Xenith lives and breathes XenDesktop – and delivers quite simply the best Citrix HDX zero client this side of Win32, with HDX support that out-paces any non-windows device on the market today, including support for HDX 3D Pro.

*Xenith 2 now supports wireless-b/g/n, Xenith Pro currently supports wireless-b/g.

[Continue tour](#)



Start

Introduction

Features

Technical

Contact

Print

Dell Wyse Zero engine It's all about Zero

Technology powering a new world of cloud connected smart devices

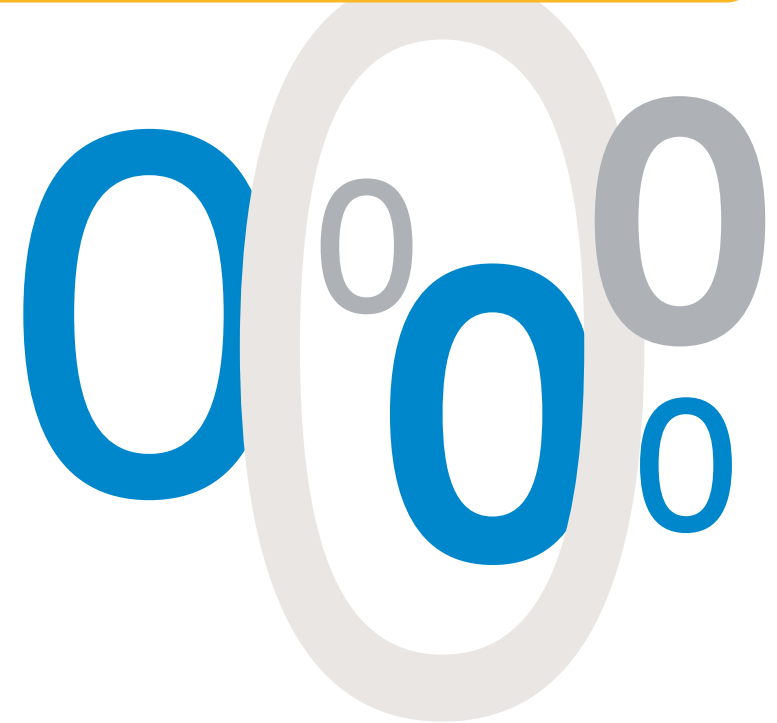
Dell Wyse Zero engine is software technology that simplifies the development of cloud-connected smart devices.

It's already in use in millions of devices, including thin clients, handheld smart devices and zero clients. And connects users to cloud computing services and virtual desktops with an efficient communications and protocol technology.

For example, Dell Wyse PocketCloud uses Zero functionality to expand the iPhone and iPad's browsing capability to include Flash support, by intelligently using its cloud resources.

Dell Wyse Zero engine is a mature, tested and purpose-built portable software technology for next generation zero clients and smart devices connecting to the Internet and the cloud.

Its tiny footprint – less than the size of a digital photograph addresses the limitations with current embedded options, which can be up to 4GB or more in size – and requires just six seconds to boot devices into productive desktops. And since Zero engine is original technology – with no published API (like Windows or Linux-based embedded products) – it's inherently virus-free and secure.



Continue tour



Start

Introduction

Features

Technical

Contact

Print

Dell Wyse Xenith Dedicated software

Citrix Receiver for Dell Wyse Xenith

Designed by Dell Wyse in collaboration with Citrix specifically for these Dell Wyse zero clients, Xenith 2 and Xenith Pro provide:

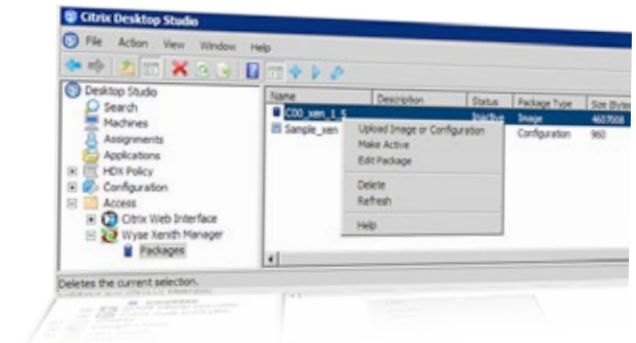
- HDX 3D Pro.
- Citrix logon experience.
- HDX MediaStream.
- HDX WAN optimization.
- HDX Multi-stream.
- HDX RealTime.
- HDX Plug-n-Play.
- Support for Access Gateway (in CSG mode).
- Progressive display.
- Session reliability.
- Desktop restart.

Dell Wyse Xenith Manager

Designed in collaboration with Citrix, Dell Wyse Xenith Manager, now part of XenDesktop 5, delivers tighter integration and vital flexibility and device longevity benefits. And, as it's provided on the Citrix XenDesktop 5 install media – Citrix XenDesktop and Dell Wyse Xenith™ deliver a fully integrated and unprecedented combination of simplicity, performance and security for office-based workers, while ensuring a high-definition user experience.

Integrated intelligence works with Citrix XenDesktop to take care of discovery, initial configuration and updates through the network – as well as giving you control – when and if you need it.

Dell Wyse Xenith is the only end point integrated into XenDesktop 5 management console (Desktop Studio).



[Continue tour](#)



Start

Introduction

Features

Technical

Contact

Print

Dell Wyse Xenith 2 or Xenith Pro?

Dell Wyse Xenith 2

With its extremely compact footprint Xenith 2 is the ideal companion device for Citrix XenDesktop utilizing Citrix HDX technology. Choose Xenith 2 when you need a compact zero client for:

Fast plug-n-play deployment.

Fast boot-up and production readiness.

Auto-configuration and zero management.

High density user workstations.

Highly scalable deployments.

Risk free data access in sensitive environments.

Multiple-user hot desking.

Multimedia and high definition graphics.

Minimal energy use and reduced carbon footprint.

Small size and high affordability.

Dell Wyse Xenith Pro

Builds on the success of its little brother and goes beyond every other zero client on the planet too – with additional processing power, higher performance and even higher levels of connectivity. Choose Xenith Pro when you need a zero client for:

Twice the Citrix HDX performance – for truly dazzling multimedia, HD Flash content and unified communications.

Users needing dual digital display support and L-shaped configurations.

Class-leading connectivity: with 6 USB and 2 serial ports for excellent up to date and legacy peripheral support.

The best Citrix HDX user experience.

We'll help you choose which Dell Wyse Xenith will suit you best.

Continue tour



Start

Introduction

Features

Technical

Contact

Print

Connectivity Dell Wyse Xenith 2



Rear of device

Mount Dell Wyse Xenith 2 to the rear of a monitor with optional mounting kit (uses free VESA mounts).



Kensington lock slot

DVI-I Video output for one or two displays (dual displays require optional splitter cable)

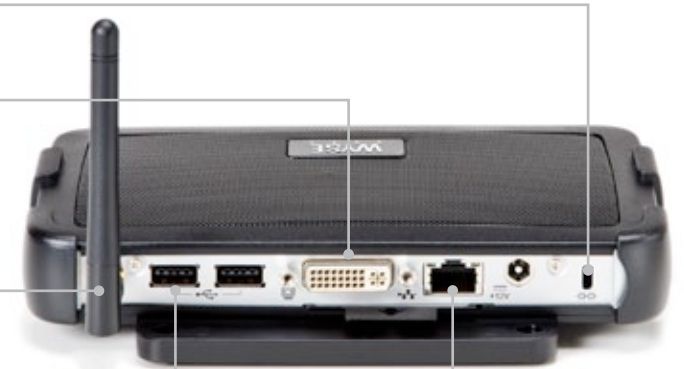
WiFi antenna connector for optional 802.11 b/g/n

Four available external USB 2.0 ports (2 front; 2 back)

10/100/1000 Base-T Ethernet port

Audio out: 1/8-inch mini jack, 16 bit stereo

Audio in: 1/8-inch mini jack, 8 bit stereo microphone



Continue tour



Start

Introduction

Features

Technical

Contact

Print

Connectivity Dell Wyse Xenith Pro



Six available external USB 2.0 ports (2 front; 4 back)

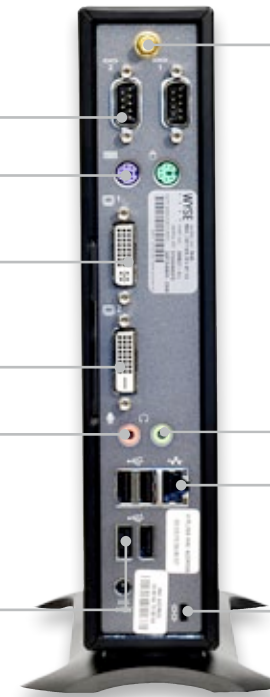
Two serial ports

Two PS/2 ports for keyboard and mouse

One DVI-I port

One DVI-D port

Audio In: 1/8-inch mini, 8 bit stereo microphone



WiFi antenna connector for optional 802.11 b/g

Audio out: 1/8-inch mini, 16 bit stereo internal mono speaker

10/100/1000 Base-T Gigabit Ethernet port

Kensington lock slot

Continue tour



Start

Introduction

Features

Technical

Contact

Print

Green computing without compromise



That's Dell Wyse EarthSmart™ computing

Through our EarthSmart Computing initiative we are committed to helping organizations implement a greener computing strategy – one that delivers a more efficient and productive computing experience for your users with a positive effect on energy wastage, heat and carbon emissions.

Green power

The Dell Wyse Xenith family packs a considerable punch with its green credentials. From reduced manufacturing impact and end-of-life recycling waste, to as little as 7 watts energy consumption, deploying Dell Wyse Xenith zero clients will enable your organization to achieve a lighter carbon footprint.



More information

Download carbon calculators, fact sheets and white papers from here:
www.wyse.com/green

Continue tour



Start

Introduction

Features

Technical

Contact

Print

Technical Dell Wyse Xenith family

Dell Wyse Xenith 2 and Xenith Pro feature a wealth of features. Check them all out here. If you have any further questions about your deployment, simply contact your Dell Wyse representative.

[Want to learn more? Simply click the relevant icon.](#)

Dell Wyse Xenith 2



Dell Wyse Xenith Pro



Start

Models

Features

Technical

Contact

Print

Hardware specifications Dell Wyse Xenith 2

Processors	Marvell® ARMADA™ PXA 510 v7 1.0 GHz system-on-chip (SoC)
Memory	OMB Flash / 1GB RAM
I/O peripheral support	One DVI-I port, DVI to VGA (DB-15) adapter included Dual-video support with optional DVI-I to DVI-D plus VGA-monitor splitter cable (sold separately) Four USB 2.0 ports (2 front, 2 back) One mic In / One line Out
Included	USB keyboard with Windows keys (104 keys) and optical mouse
Networking / comm	10/100/1000 Base-T Gigabit Ethernet Internal 802.11 b/g/n (optional)
Display	VESA monitor support with Display Data Control (DDC) for automatic setting of resolution and refresh rate Dual monitor supported Single: 1920x1200@60Hz, color depth: 8, 15, 16, 24 or 32bpp Two independent full resolution frame buffers Dual: 1920 x 1200 dual monitor max supported
Audio	Output: 1/8-inch mini jack, full 16 bit stereo, 48KHz sample rate Input: 1/8-inch mini jack, 8 bit stereo microphone
Physical characteristics	Height: 1.38 inches (34mm) Width: 6.94 inches (177mm) Depth: 4.75 inches (121mm)

Shipping weight	6 lbs. (2.7kg)
Mountings	Stand for horizontal use (Part #920331-01L) and VESA wall mounting included
Device security	Built-in Kensington security slot (cable sold separately)
Power	Worldwide auto-sensing 100-240 VAC, 50/60 Hz. Energy Star® V.5.0 compliant power supply. Average power usage with device connected to 1 keyboard with 1 PS/2 mouse and 1 monitor: Under 7 Watts
Temperature eange	Horizontal and vertical operating positions: 50° to 104° F (10° to 40° C)
Humidity	20% to 80%
Certifications	German EKI-ITB 2000, ISO 9241-3/-8 cULus 60950, TÜV-GS, EN 60950 FCC Class B, CE, VCCI, C-Tick WEEE, RoHS Compliant
Warranty	Three-year hardware warranty Visit our web site for WyseChoice extensions and upgrades



Hardware specifications Dell Wyse Xenith Pro

Processors	1.5 GHz AMD Sempron Processor
Memory	128MB Flash / 512MB RAM
I/O peripheral support	One DVI-I Port / One DVI-D Port Two PS/2 ports / Two serial ports Six external USB 2.0 ports (2 front, 4 back) One Mic In / One Line Out
Included	Enhanced PS/2 keyboard with Windows keys (104 keys) and PS/2 optical mouse
Networking / comm	10/100/1000 Base-T Gigabit Ethernet 802.11 b/g (factory option)
Display	VESA monitor support with Display Data Control (DDC) for automatic setting of resolution and refresh rate Dual monitor supported Single: 2560x1600 32 bpp 60Hz Dual: 1920x1200 max support for dual monitors
Audio	Output: 1/8-inch mini, 16 bit stereo. Internal mono speaker Input: 1/8-inch mini, 8 bit stereo microphone
Physical characteristics	Height: 9.80 inches (250mm) Width: 8.80 inches (225mm) Depth: 2.10 inches (53mm)

Shipping weight	6.50 lbs. (2.95kg)
Mountings	Vertical feet (optional horizontal feet) Optional VESA mounting bracket
Device security	Built-in Kensington security slot (cable sold separately)
Power	Worldwide auto-sensing 100-240 VAC, 50/60 Hz. Energy Star® V.5.0 compliant power supply. Average power usage with device connected to 1 keyboard with 1 PS/2 mouse and 1 monitor: 14.6 Watts in idle state
Temperature range	Horizontal position: 50° to 95° F (10° to 35° C) Vertical position: 50° to 104° F (10° to 40° C)
Humidity	20% to 80%
Certifications	German EKI-ITB 2000, ISO 9241-3/-8 cULus 60950, TÜV-GS, EN 60950 FCC Class B, CE, VCCI, C-Tick WEEE, RoHS Compliant
Warranty	Three-year hardware warranty Visit our web site for WyseChoice extensions and upgrades



Start

Introduction

Features

Technical

Contact

Print



Contact Dell Wyse.

Dell Wyse

3471 North First Street,
San Jose,
CA 95134-1801

Visit our website at:

<http://www.wyse.com> or send
an email to: sales@wyse.com

Dell Wyse Sales

800 GET WYSE (800 438 9973)

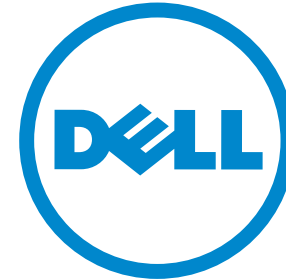
International customers please dial:

00 1 408 473 1200

Dell Wyse Support Portal

Dell Wyse Support Portal provides a fast and
accurate way to communicate interactively
with Dell Wyse Customer Support, and helps
us respond to your requests more quickly.

<http://support.wyse.com/selfservice.html>



Wyse

Dell Wyse offers cloud client
computing sales, service and
support expertise around the
globe. Click for contact details.

About Dell

Dell Inc. (NASDAQ: DELL) listens to customers and delivers
innovative technology and services that give them the power
to do more. For more information, visit www.dell.com

©2012 The Dell Wyse logo and references are trademarks of Dell Wyse. Other product names mentioned herein are for identification purposes
only and may be trademarks and/or registered trademarks of their respective companies. All specifications are subject to change without notice.
Whilst we make every effort to ensure the accuracy of the details, specifications, models, images and benefits featured in this datasheet, we
cannot be held responsible for any errors and/or omissions. If you have any queries regarding Dell Wyse products please contact your authorized
regional Dell Wyse Partner. Some features require support by server operating system and protocol. Approved final 280912.

Start

Models

Features

Technical

Contact

Print

wyse.com

Dell Wyse Xenith family

Your desktop just got easier. Much easier.

The zero clients built for Citrix® HDX

Delivering major advances in performance, simplicity and longevity, the Dell Wyse Xenith family of next generation zero clients – **Xenith 2** and **Xenith Pro** – are redefining the ‘zero’ category Dell Wyse itself created.

Absolutely Zero. That’s Dell Wyse Xenith

Which means – **Zero Delays:** with a six second start up time.

Zero Management:

Pure plug-and-play auto set-up that does everything including ongoing updates.

Zero Security Issues:

No Windows or Linux APIs means immunity from viruses or malware.

Zero Energy Use (Almost):

less than 7 watts of power in operation.

Zero Compromise User Experience:

Built for Citrix – Dell Wyse Xenith 2 and Xenith Pro live-and-breathe Citrix XenDesktop and HDX, now with support for HDX 3D Pro.

Dedicated software and management

Dell Wyse Xenith Manager, now part of XenDesktop 5, delivers tighter integration, vital flexibility and device longevity benefits. And, as it’s provided on the Citrix XenDesktop 5 install

media, Citrix XenDesktop and Dell Wyse Xenith deliver a fully integrated and unprecedented combination of simplicity, performance and security, while ensuring a high-definition user experience. Dell Wyse Xenith is the only family of end points integrated into the Citrix XenDesktop 5 management console (Desktop Studio).

Green

From reduced manufacturing impact and end-of-life recycling waste, to as little as 7 watts energy consumption in operation, deploying Dell Wyse Xenith zero clients will enable your organization to achieve a lighter carbon footprint.

Dell Wyse Xenith 2

Overview

With its compact footprint Dell Wyse Xenith 2 is the ideal companion device for Citrix XenDesktop and Citrix HDX technology – ‘straight-out-of-the-box’.

Superb performance and user experience

From the start superb performance is the promise behind every Dell Wyse Xenith 2. It’s ready to plug-and-play, with its ARM SoC processor and advanced best performance-per-watt hardware accelerator, delivering productive desktops in under six seconds.



Dell Wyse Xenith 2 users benefit from high performance connectivity that includes support for two high resolution displays, four USB ports and two PS/2 ports for a host of peripherals, fast gigabit Ethernet and b/g/n WiFi. And all this can be tucked away securely out-of-sight with included VESA mounting for fitting behind monitors.

While Dell Wyse Xenith Manager, included on Citrix Xenith Manager 5, means looking after them is as easy as using them.

Dell Wyse Xenith Pro

Overview

Dell Wyse Xenith Pro is the high-performance, high-connectivity zero client for Citrix Xen Desktop and Citrix HDX.

Ultimate performance boost

Dell Wyse Xenith Pro offers twice the processing power for Citrix HDX users, with stunning playback and display of multimedia and Flash. And its AMD Sempron Processor does it all while lowering power consumption – without compromising performance.

Users are treated to enhanced display support that includes rotation and unparalleled connectivity with 2 DVI ports, 6 USB ports and 2 serial ports. And just like Dell Wyse Xenith 2, Xenith Pro frees up desk space with optional mounting brackets for fitting behind monitors, under desks and to walls.



Specification

Dell Wyse Xenith 2

Dell Wyse Xenith Pro

Processors	Marvell® ARMADA™ PXA 510 v7 1.0 GHz system-on-chip (SoC)	1.5 GHz AMD Sempron Processor
Memory	0MB Flash / 1GB RAM	128MB Flash / 512MB RAM
I/O peripheral support	One DVI-I port, DVI to VGA (DB-15) adapter included Dual-video support with optional DVI-I to DVI-D plus VGA-monitor splitter cable (sold separately) Four USB 2.0 ports (2 front, 2 back) One mic In / One line Out	One DVI-I port / One DVI-D port Two PS/2 ports / Two serial ports Six external USB 2.0 ports (2 front, 4 back) One mic In / One line Out
Included	USB keyboard with Windows keys (104 keys) and optical mouse	Enhanced PS/2 keyboard with Windows keys (104 keys) and PS/2 optical mouse
Networking / Comm	10/100/1000 Base-T Gigabit Ethernet Internal 802.11 b/g/n (optional)	10/100/1000 Base-T Gigabit Ethernet Internal 802.11 b/g (optional)
Display	VESA monitor support with Display Data Control (DDC) for automatic setting of resolution and refresh rate Dual monitor supported Single: 1920x1200@60Hz, color depth: 8, 15, 16, 24 or 32bpp Two independent full resolution frame buffers Dual: 1920 x 1200 dual monitor max supported	VESA monitor support with Display Data Control (DDC) for automatic setting of resolution and refresh rate Dual monitor supported Single: 2560x1600 32 bpp 60Hz Dual: 1920x1200 max support for dual monitors
Audio	Output: 1/8-inch mini jack, full 16 bit stereo, 48KHz sample rate Input: 1/8-inch mini jack, 8 bit stereo microphone	Output: 1/8-inch mini, 16 bit stereo. Internal mono speaker Input: 1/8-inch mini, 8 bit stereo microphone
Physical characteristics	Height: 1.38 inches (34mm) Width: 6.94 inches (177mm) Depth: 4.75 inches (121mm)	Height: 9.80 inches (250mm) Width: 8.80 inches (225mm) Depth: 2.10 inches (53mm)
Shipping Weight	6 lbs. (2.7kg)	6.50 lbs. (2.95kg)
Mountings	Stand for horizontal use and VESA wall mounting included	Vertical feet (optional horizontal feet) Optional VESA mounting bracket
Device Security	Built-in Kensington security slot (cable sold separately)	Built-in Kensington security slot (cable sold separately)
Power	Worldwide auto-sensing 100-240 VAC, 50/60 Hz. Energy Star® V.5.0 compliant power supply Average power usage with device connected to 1 keyboard with 1 PS/2 mouse and 1 monitor: Under 7 Watts	Worldwide auto-sensing 100-240 VAC, 50/60 Hz. Energy Star® V.5.0 compliant power supply Average power usage with device connected to 1 keyboard with 1 PS/2 mouse and 1 monitor: 14.6 Watts in idle state
Temperature Range	Horizontal and vertical operating positions: 50° to 104° F (10° to 40° C)	Horizontal position: 50° to 95° F (10° to 35° C) Vertical position: 50° to 104° F (10° to 40° C)
Humidity	20% to 80%	20% to 80%
Certifications	German EKI-ITB 2000, ISO 9241-3/-8 cULus 60950, TÜV-GS, EN 60950 FCC Class B, CE, VCCI, C-Tick WEEE, RoHS Compliant	German EKI-ITB 2000, ISO 9241-3/-8 cULus 60950, TÜV-GS, EN 60950 FCC Class B, CE, VCCI, C-Tick WEEE, RoHS Compliant
Warranty	Three-year hardware warranty Visit our web site for Dell WyseChoice extensions and upgrades	Three-year hardware warranty Visit our web site for Dell WyseChoice extensions and upgrades



Learn more: Contact Dell Wyse at sales@wyse.com or call 1-800-GET-WYSE

wyse.com

Dell Wyse
3471 North First Street
San Jose, CA 95134-1801

Visit our website at:
<http://www.wyse.com>
Or send email to: sales@wyse.com

Dell Wyse Sales
800 GET WYSE
(800 438 9973)

Dell Wyse Customer Service Center:
800 800 WYSE (800 800 9973)

